



# *Roots 2 Rise Outdoors*

## Ontario Autism Program (OAP)

### Funding Information

### *Our Mission*

Roots 2 Rise Outdoors is dedicated to fostering confident, caring, and empathetic future leaders who are connected to protecting their environment and their communities.

### *Our Values*

Compassion ~ Curiosity ~ Awareness ~ Gratitude



### *Collaboration*



We are excited to be sharing that Kerry Maisels Behaviour Consulting (KMBC) and Roots 2 Rise Outdoors have been collaborating on the development and training of a unique approach to inclusive programming. Utilizing a play-based, child-led approach to learning, we have integrated various concepts into the Roots 2 Rise Outdoors methodology, forming a specialized training program for our teams. This program aims to cultivate a deeper understanding of providing inclusive spaces for children with neurodiversity in outdoor environments.

KMBC is partnering with Roots 2 Rise Outdoors to provide consultation, training, and support for staff. Kerry and her team will be providing direct supervision for children with a neurodevelopmental disorder such as autism (ASD), attention deficit hyperactivity disorder (ADHD) and intellectual disabilities (ID.)

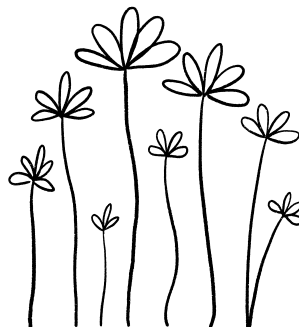
## Who is KMBC?



At KMBC, our mission is to empower children with neurodevelopmental disorders and behavioural, emotional, and intellectual challenges to unlock their full potential and lead fulfilling lives. We are dedicated to providing exceptional, individualized services, promoting understanding, and fostering growth within the communities we serve. Learn more about KMBC and their services at [www.kerrymaisels.com](http://www.kerrymaisels.com)

## OAP (Ontario Autism Program) Who is eligible?

- KMBC is an approved OAP provider. If your child is receiving funding you will be able to apply your funding to the Roots 2 Rise Outdoors program, as it will be supervised by a Board-Certified Behaviour Analyst. In addition to the training that each staff will be receiving, Kerry and her team will provide individualized supervision for each child that is eligible to use their funding.
- Upon acceptance, the supervision process will be unique for each child, including assessment, goal setting and an in depth follow up. Kerry and her team can support skills across a variety of learning domains such as communication, social skills, play, and emotional regulation.
- Through the organic flow of the Roots 2 Rise Outdoors approach, these skills will be supported and encouraged in a kind, calm, and relaxed environment.
- If you do not have OAP funding, KMBC will discuss the eligibility requirements and payment options directly.
- The OAP funding option with direct supervision will be available for our Cedarvale and Markham locations.



## The research

Research shows that children with ASD and their families experience barriers to participating in outdoor recreation activities, and highlights that these types of experiences are critical for a child's physical health, fitness and social emotional development.



There are 4 main barriers that have been identified:

- 1) Lack of meaningful inclusive activities available for children due to the frequent social communication and behavioral challenges associated with ASD.
- 2) Lack of community activity programs.
- 3) Inability for safe participation.
- 4) Lack of awareness and understanding about ASD in community settings.

KMBC and Roots 2 Rise Outdoors see these barriers as an opportunity for innovation. Our partnership will work to break down all 4 barriers by providing comprehensive collaborative training for staff for all of the Roots 2 Rise Outdoors team, as well as individualized goals for each child which will work to increase safety and inclusive participation.

## What is ABA:



Applied Behaviour Analysis (ABA) is an evidence-based treatment that looks at how behaviour is affected by its environment and how learning takes place. ABA works to increase positive and meaningful behaviours and decrease any behaviors that may pose a barrier to learning or participation. ABA is personalized to meet each child's unique needs, making it an effective approach to diverse challenges. The Roots 2 Rise Outdoors program provides a unique opportunity to apply naturalistic developmental behavioral interventions (NDBI). NDBI's use natural contingencies in organic settings to teach developmentally appropriate skills.

## *What you can expect from the KMBC team*

### **Intake meeting:**

- Upon registering for the Roots 2 Rise Outdoors program, KMBC will contact you for an intake meeting. This will be an opportunity to learn more about your child's strengths & areas of need, and to identify suitability for the program.

### **Individualized service plan:**

- Once accepted, the KMBC team will work with each family to create an individualized service plan that will outline goals for your child for the duration of their time in the program. (I.e. communication, social, emotional, fine/gross motor & play.)

### **Safety plan:**

- The KMBC team will help to understand any safety concerns you may have for your child. (Ex. elopement, aggression, or self-injury.)
- A safety plan will be created and discussed with your child's team to help them to plan ahead and to respond accordingly in unsafe situations.

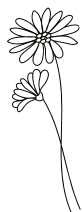
### **Data collection:**

- KMBC will collect data on our goals, to be able to objectively identify whether each child is making progress.
- KMBC will observe your child in the program and will provide ongoing feedback and supports to the Roots 2 Rise Outdoors staff.

### **Summary report:**

- Each family will receive a summary report at the end of the program, with our observations throughout the week. KMBC will be happy to meet with you to discuss effective strategies and future supports.

## Next steps!



### 1) REGISTER

Fill out the registration form for Chava Farms or Cedarvale and select the option “I would like to learn more about using my OAP funding.”

### 2) KMBC INTAKE

Roots 2 Rise Outdoors will hold your space in the summer program that you have selected and KMBC will follow up with the specialized intake form and contact you directly for an intake meeting.

### 3) PAYMENT - PROGRAM DETAILS

Once approved, Roots 2 Rise Outdoors will confirm your registration and proceed with payment details and follow up with all of the necessary program details.

We are excited to be working with Kerry and her team to help provide the best support for your child this summer!  
Feel free to reach out with any questions!

*Kerry Maisels*

Founder (BCBA)

[www.kerrymaisels.com](http://www.kerrymaisels.com)  
[kerry@kerrymaisels.com](mailto:kerry@kerrymaisels.com)  
[@kmbehaviourconsulting](https://www.instagram.com/kmbehaviourconsulting)



*Robyn Broudie*

Founder

[www.roots2riseoutdoors.com](http://www.roots2riseoutdoors.com)  
[robyn@roots2riseoutdoors.com](mailto:robyn@roots2riseoutdoors.com)  
[@roots2riseoutdoors](https://www.instagram.com/roots2riseoutdoors)

